

# Woodland Lake Park

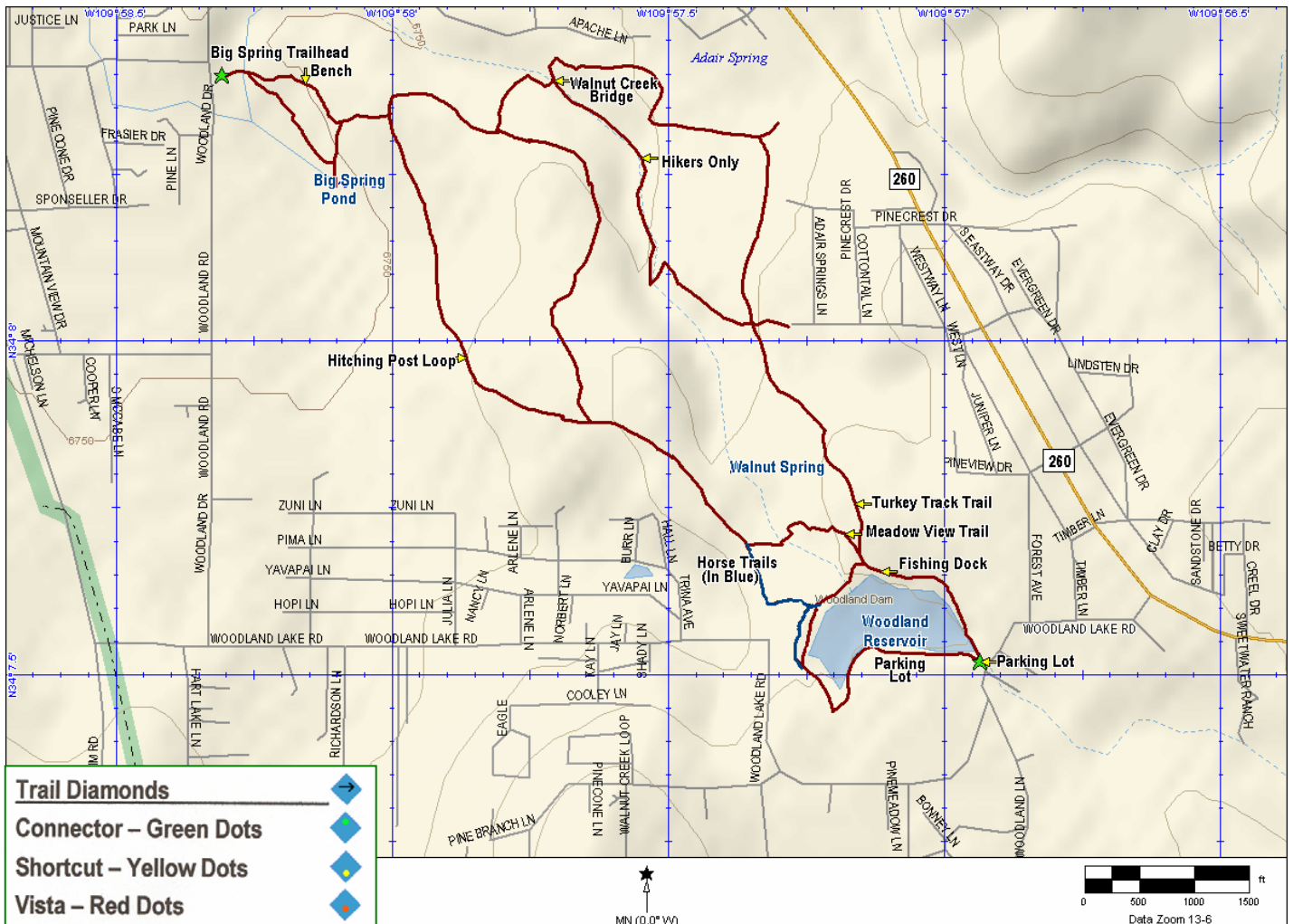
**Distance:** 3 miles around Hitching Post Loop Trail and back to boat dock. 0.5 mi. to Turkey Track Trail. 0.75 miles to Pincrest Trail. 1.5 miles to Big Springs Trail. 1 mile around Lake Loop Trail. 2.0 miles along the Hitching Post Loop Trail.

**Difficulty:** Hiking – Easy  
Mountain Biking - Easy  
Equestrian – Easy

**Trailhead Parking:** Parking at lot off Woodland Lake Road and at the fishing dock and armadas.

**Access to Trail:** From the traffic light on AZ 260 at Pinetop-Lakeside Safeway Plaza: go south (toward McNary) 1.2 miles. Turn right on Woodland Lake Road. Go 0.3 mi to the first entrance (the armadas and boat dock) or go 0.4 mi to the second entrance (the ball fields and tennis courts)

**Trail Highlights:** A rural treasure within city limits, the trails offer something for almost everyone. A paved ADA-designed trail, ideal for strollers, wheelchairs, etc. winds around the lake. Hike, bike or ride a horse along the rugged and beautiful trails.



Produced by TRACKS With a Garmin eTrex Venture & DeLorme Topo 5 & Microsoft Word Software.



1360 NORTH NIELS HANSEN LANE  
LAKESIDE, ARIZONA 85929  
PHONE (928) 368-6700  
www.tracks-pinetop-lakeside.org